

HOLLMAN ■ BOLOGNA

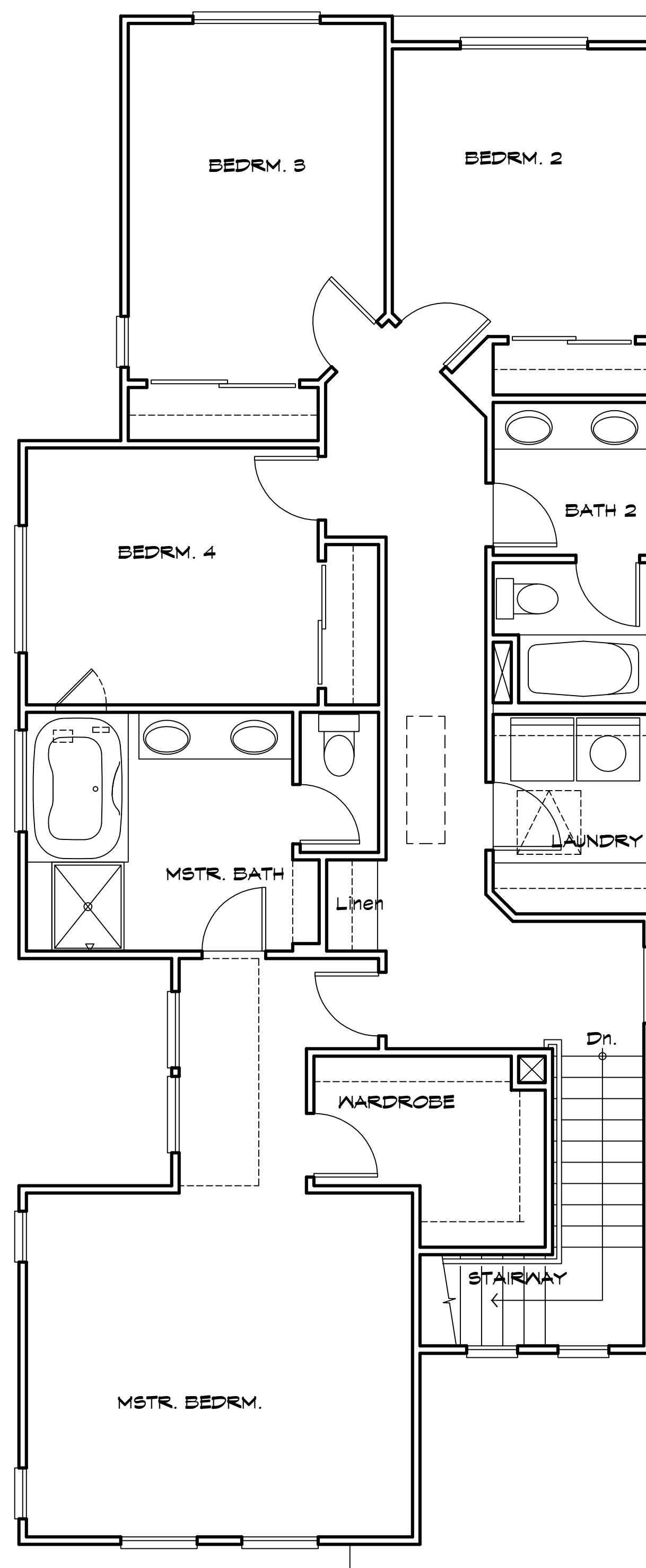
Architecture & Planning, Inc.

1415 OAKLAND BOULEVARD SUITE 103
WALNUT CREEK, CA. 94596

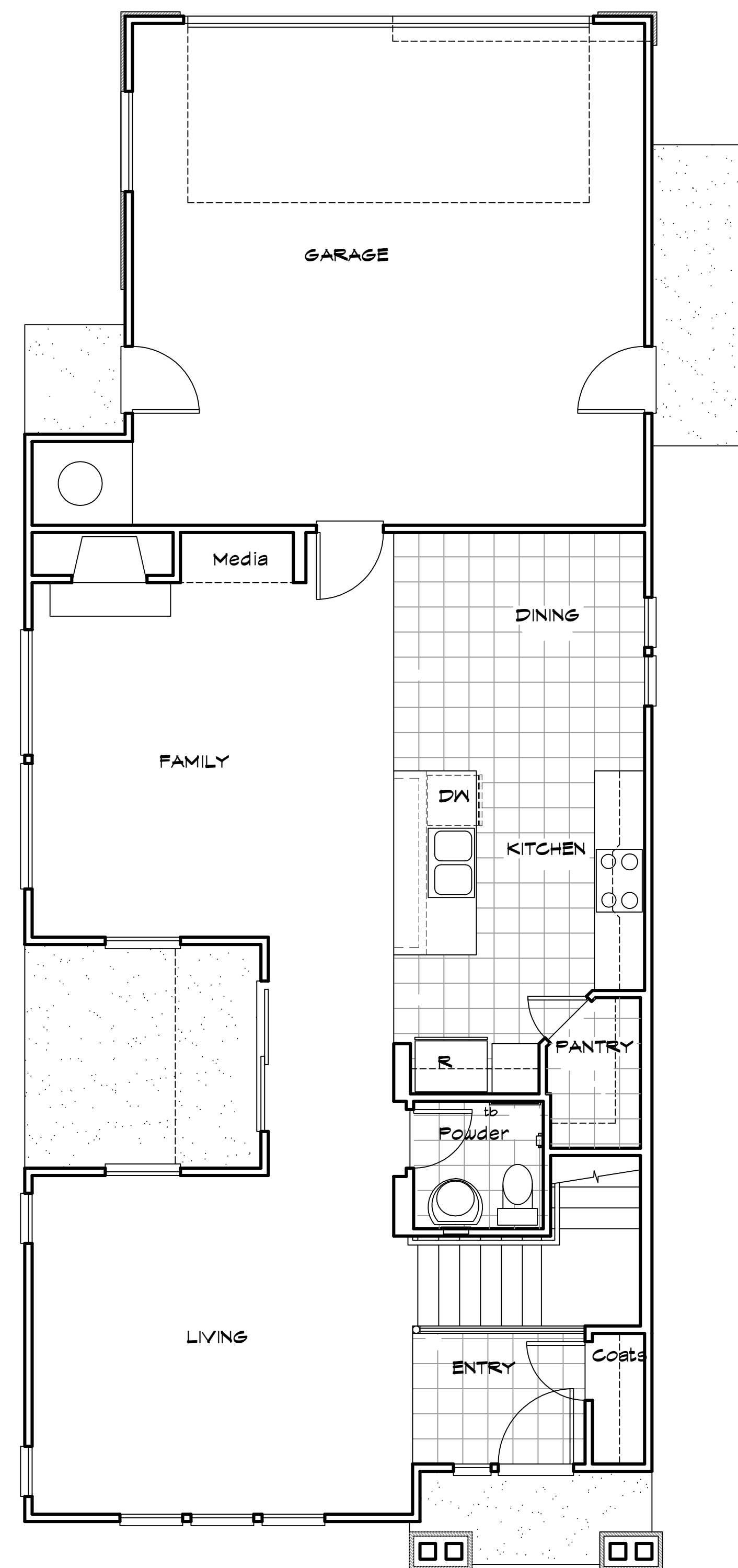
TEL. 925. 930. 7575 ■ FAX. 925. 930. 8147

MITCHELL CREEK PLACE

Clayton, California
Lenox Homes, LLC



SECOND FLOOR - LOT 6
(REVERSE)



FIRST FLOOR - LOT 6
(REVERSE)

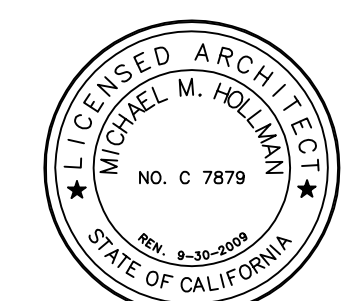
LOT 6 FLOOR AREA:
1st FLR.: 848 SF.
2nd FLR.: 1300 SF.
2148 SF.
GARAGE : 441 SF.
PORCH : 35 SF.

LEGEND

- PEDESTAL SINK
- LAVATORY SINK
- TOILET-1/6 GAL./FLUSH MAX. SEE PLMB.NOTE #5 ON SHT. 11
- 32"x60" ENAMELED STEEL TUB & SHOWER - CER. TILE SURROUND #V SHOWER ROD
- DOUBLE SINK W/GARBAGE DISPOSAL
- DSW W/DRAIN TO GARBAGE DISPOSAL. PROVIDE AIR GAP.
- GAS COOKTOP W/ MICRO. EXHAUST HOOD- SINGLE OVEN UNDER COOKTOP
- REFRIGERATOR SPACE PROVIDE RECESSED COLD WATER STUB
- FIB.GL. TUB SET O/ PLATFORM- SEE PLAN FOR SIZE- MODEL PER BUILDER'S SPECS.
- SHOWER PAN- FLORESTONE SAFILOR-RECESS SHOWER RECEPTOR- SEE PLAN FOR SIZE-SAFETY GL. ENCLOSURE & DOOR.
- DRYER SPACE, PROVIDE (42) DRYER VENT SEE MECH. (AD4)
- WASHER SPACE, PROVIDE RECESSED HOT, COLD WATER STUB & WASTE LINE. NOTE - ALWAYS ROUGH-IN DRYER ON RIGHT HAND SIDE
- MC RECESSED MEDICINE CABINET
- TP TOILET PAPER HOLDER
- TOWEL BAR @ +48" A.F.F.
- 4" FLOOR ELEVATION CHANGE
- 2x6 PLUMBING/ MECHANICAL WALL
- FLOOR FINISH MATERIAL CHANGE SEE DET. (20) (AD4)

FLOOR PLAN KEYNOTES

1. 5/8" TYPE "X" GYP. BOARD AT:
 - 1) WALLS, AT GARAGE SIDE, FROM FOUNDATION TO BOTTOM OF ROOF SHEATHING OR THROUGHOUT GARAGE, & AT CEILING BETWEEN GARAGE & LIVING SPACES.
 - 2) BEAMS, POSTS & SUPPORTING WALL AT GARAGE.
 - 3) WALLS & CEILING OF USEABLE SPACE UNDER STAIRS & IN UTILITY CLOSETS.
2. A SELF-CLOSING, TIGHTFITTING SOLID-WOOD DOOR 1 3/8 INCHES (35 MM) IN THICKNESS, OR A SELF-CLOSING, TIGHTFITTING DOOR HAVING A FIRE-PROTECTION RATINGS OF NOT LESS THAN 20 MINUTES WHEN TESTED IN ACCORDANCE WITH PART II OF UBC STANDARD T-2.
3. WATER HEATER O/PLATFORM- PROVIDE COMBUSTION AIR & VENT TO OUTSIDE. PROVIDE SEISMIC ANCHORING, S.S.D. (30) (AD4)
4. EXTENT OF GARAGE DOOR IN THE OPEN POSITION.
5. CONCRETE CURB AT GARAGE, S.S.D.
6. DRAIN PAN UNDER WASHER WITH DRAIN PIPE TO OUTSIDE
7. TEMPERED SAFETY GLASS
8. A WINDOW IN BEDROOMS SHALL HAVE A MIN. NET CLEAR OPENING OF 57 SQ.FT. THE NET CLEAR OPENING HEIGHT SHALL BE 24" & WIDTH SHALL BE 20". SILL HEIGHT SHALL NOT BE MORE THAN 44" A.F.F. (C.B.C. SEC.910.4).
9. HEATILATOR FIREPLACES PREFABRICATED ZERO CLEARANCE DIRECT VENT GAS FIREPLACE W/GLASS DOOR & OUTSIDE VENTILATION MODEL ND4296 WITH ELECTRONIC IGNITION, OR APPROVED EQUAL. PROVIDE NONCOMBUSTIBLE SURROUND, TERMINATION CAP & SHIELD & INSTALL PER MANUF'S SPECS.
10. RAISED HEARTH - SEE INT. ELEV.S (22) (AD4)
11. FIREPLACE TERMINATION CAP & SHIELD, SEE ELEV.
12. - NOT USED -
13. 30"x30" MIN. ATTIC ACCESS DOOR, & WEATHER STRIPPING. SEE DET. (24) (AD4)
14. HORIZ. FLOW F.A.U. O/PLATFORM IN ATTIC SPACE. PROVIDE COMBUSTION AIR, VENT & CONDENSATE LINE TO OUTSIDE.
15. MECHANICAL CHASE
16. LINE OF WALL BELOW
17. LINE OF WALL/FLR. ABOVE
18. 8' H. FLAT SOFFIT OPENING
19. LINE INDICATING APPROX. LOC. OF FENCE - SEE LANDSC. DWS
20. CONCRETE SLAB PORCH DECK. SLOPE AWAY FROM BLDG.
21. LANDING AT EXTERIOR DOOR SHALL HAVE A DEPTH OF 36" IN DIRECTION OF WIDTH SHALL BE 12" WIDER THAN OPENING OF DOOR. CONCRETE SHALL HAVE BROOM FINISH AND SLOPE AWAY FROM THE DOOR.
22. UTILITY METER LOCATION
23. ARCHITECTURAL EXT. RAILING - SEE ELEV.S
24. STONE VENEER. SEE EXTERIOR ELEV.
25. STAIRWAY W/ 17 RISERS @ 7-1/4"± AND TREADS @ 10-1/4" SEE DET. (12) (13) (14) (AD4) (AD4) (AD4)
26. +36" H. GUARD RAIL OPEN RAILING W/BALLUSTERS & NEWELL POST. SEE DET. (10) (AD4)
27. +34" H. WOOD HAND RAIL WITH METAL BRACKETS, SEE DET. (AD4)
28. +34" H. HANDRAIL/GUARDRAIL W/BALLUSTERS & NEWELL POST SEE DET. (10) (AD4)
29. UPPER CABINET ABOVE WASHER/ DRYER SPACE
30. KITCHEN ISLAND - COUNTER & CABINET- SEE INT. ELEV.S
31. UPPER & BASE WOOD CABINET W/ TILE COUNTERTOP & SPLASH
32. KITCHEN ISLAND - COUNTER & CABINET- SEE INT. ELEV.S
33. PANTRY CABINET WITH 5 SHELVES
34. LINEN UPPER & BASE CABINET WITH WOOD TOP
35. LINEN CABINET W/ FACE FRAME DOOR & ADJUSTABLE SHELVES
36. VANITY BATHROOM CABINET W CER.TILE COUNTERTOP & SPLASH
37. MIRROR - SEE INT. ELEV.
38. RECESSED MEDICINE CABINET
39. PORCH POST - SEE ELEV.S
40. BUILT IN SHOWER SEAT- SEE DET. (32) (AD4)
41. +42" H. LOW BOX WALL-GYP.BD TOP
42. SEE LANDSCAPE PLANS FOR FLATWORK DIMENSIONS



HOLLMAN BOLOGNA
Architecture & Planning, Inc. COPYRIGHT © 2007
ALL DRAWINGS AND WRITTEN MATERIAL APPEARING
HEREIN CONSTITUTE THE ORIGINAL AND UNPUBLISHED
WORK OF THE ARCHITECT AND MAY NOT BE COPIED
OR USED WITHOUT THE WRITTEN CONSENT OF THE
ARCHITECT.

NO.	DATE	ISSUE
	05/02/07	Submit for Permit Applicn
	08/17/07	Planning/Client
	09/12/07	Clarification

PLAN B - LOT 6
REVERSE

DRAWN: EC

SCALE: 1/4"=1'-0"

PROJECT: 0440

CAD FILE: 0440-Plan-B.dwg

SHEET:

A 2.13