

HOLLMAN ■ BOLOGNA

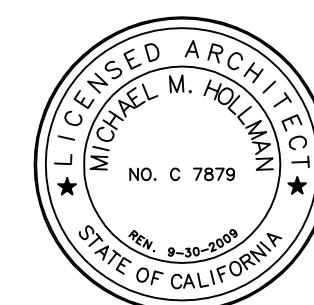
Architecture & Planning, Inc.

1415 OAKLAND BOULEVARD SUITE 103
WALNUT CREEK, CA. 94596

TEL: 925. 930. 7575 ■ FAX: 925. 930. 8147

MITCHELL CREEK PLACE

Clayton, California
Lenox Homes, LLC



HOLLMAN BOLOGNA
Architecture & Planning, Inc. COPYRIGHT © 2007
ALL DRAWINGS AND WRITTEN MATERIAL APPEARING
HEREIN CONSTITUTE THE ORIGINAL AND UNPUBLISHED
WORK OF THE ARCHITECT AND MAY NOT BE COPIED
OR USED WITHOUT THE WRITTEN CONSENT OF THE
ARCHITECT.

NO. DATE ISSUE

05/02/07 Submit for
Permit Application

08/17/07 Planning/Client

09/12/07 Clarification

NO. DATE ISSUE

05/02/07 Submit for
Permit Application

08/17/07 Planning/Client

09/12/07 Clarification

PLAN A LOT-1
FLOOR PLANS

DRAWN: ERQ/STW

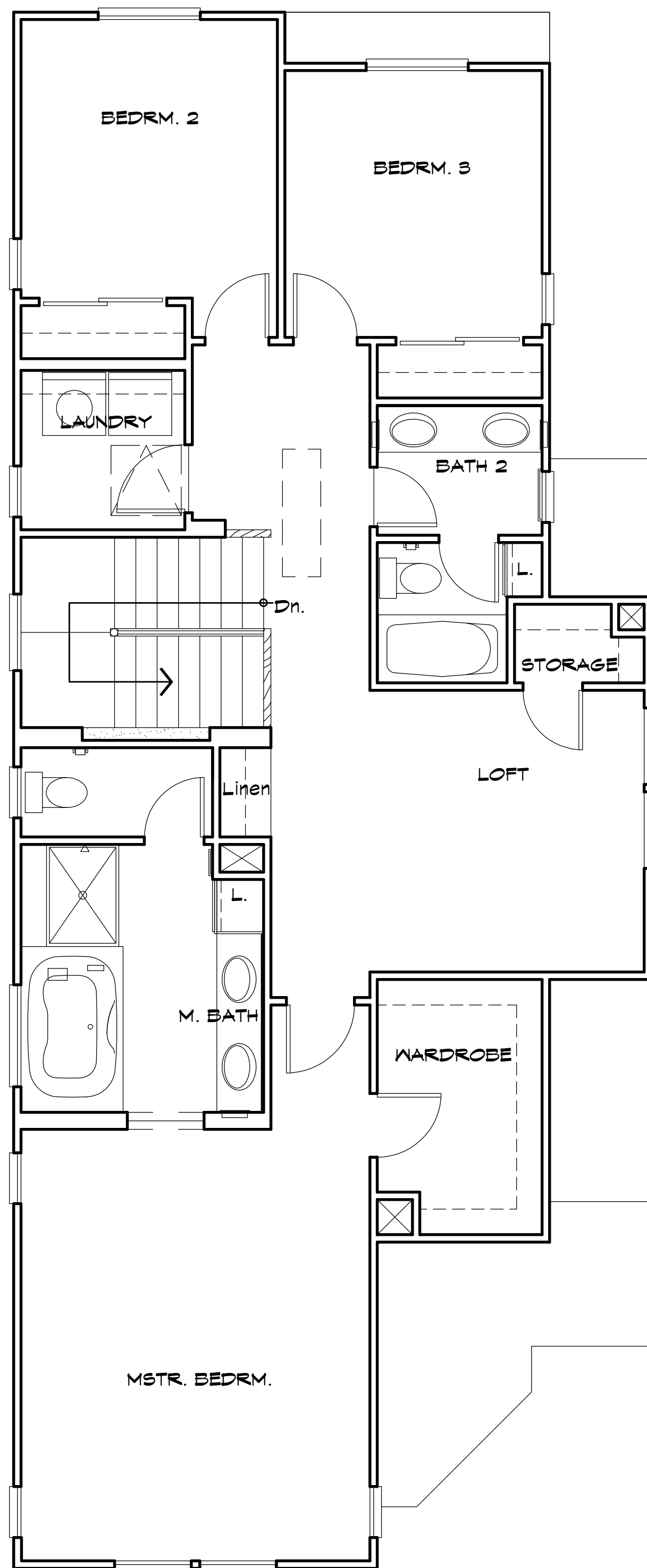
SCALE: 1/4"=1'-0"

PROJECT: 0440

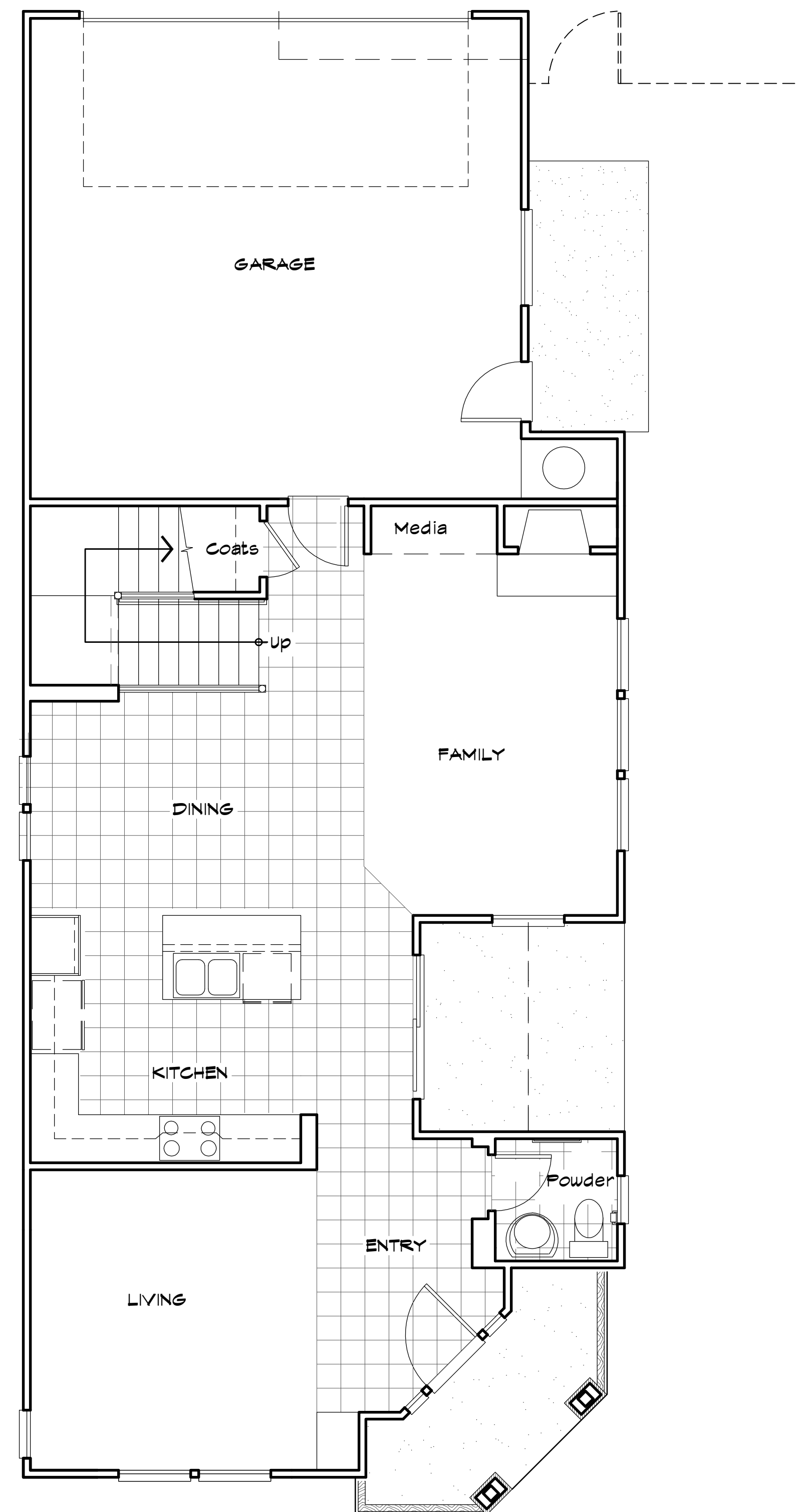
CAD FILE: 0440 PLAN Adwg

SHEET:

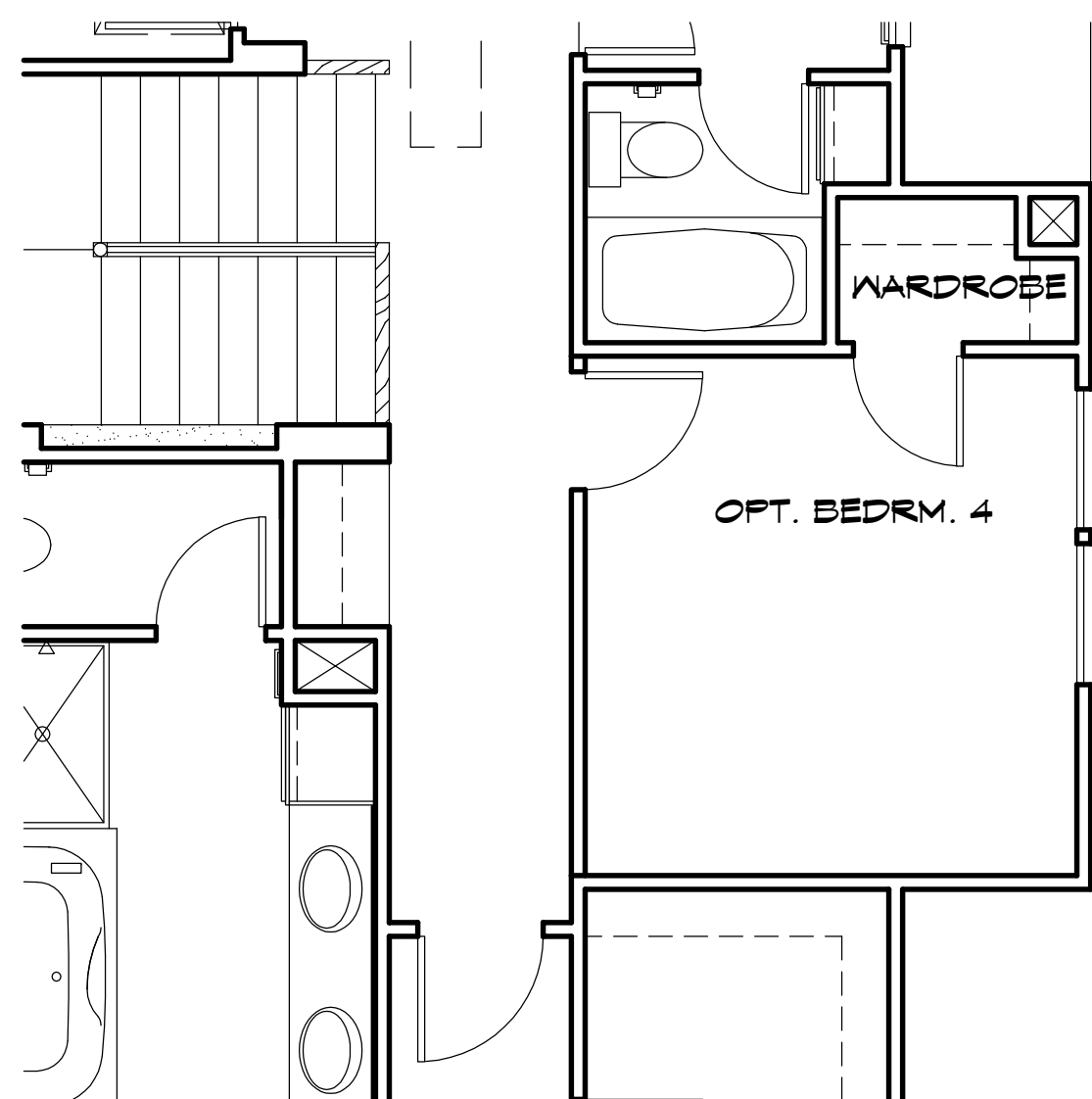
A1.1.1



SECOND FLOOR PLAN



FIRST FLOOR PLAN



BEDRM 4 OPTION

LEGEND

- PEDESTAL SINK
LAVATORY SINK
TOILET-1.6 GAL./FLUSH MAX.
32"x60" ENAMELED STEEL TUB & SHOWER
DOUBLE SINK W/GARBAGE DISPOSAL
DISHWASHER W/DRAIN TO GARAGE DISPOSAL
GAS COOKTOP W/ MICRO. EXHAUST HOOD- SINGLE OVEN UNDER COOKTOP
REFRIGERATOR SPACE PROVIDE RECESSED COLD WATER STUB
FIB./GL. TUB SET O/ PLATFORM- SEE PLAN FOR SIZE- MODEL PER BUILDER'S SPEC.
SHOWER PAN- FLORESTONE SAFLOR-RECESS SHOWER RECEPTOR- SEE PLAN FOR SIZE-SAFETY GL. ENCLOSURE & DOOR.
DRYER SPACE. PROVIDE DRYER VENT SEE MECH.
WASHER SPACE. PROVIDE RECESSED HOT, COLD WATER STUB & WASTE LINE.
NOTE - ALWAYS ROUGH-IN DRYER ON RIGHT HAND SIDE
RECESSED MEDICINE CABINET
TOILET PAPER HOLDER
TOWEL BAR @ +48" A.F.F.

FLOOR PLAN KEYNOTES

- 1. 5/8" TYPE "X" GYP. BOARD AT:
1) WALLS AT GARAGE SIDE, FROM FOUNDATION TO BOTTOM OF ROOF SHEATHING OR THROUGHOUT GARAGE, & AT CEILING BETWEEN GARAGE & LIVING SPACES.
2) BEAMS, POSTS & SUPPORTING WALL AT GARAGE.
3) WALLS & CEILING OF USEABLE SPACE UNDER STAIRS & IN UTILITY CLOSETS.
2. A SELF-CLOSING, TIGHTFITTING SOLID-WOOD DOOR 1 3/8 INCHES (35 MM) IN THICKNESS, OR A SELF-CLOSING, TIGHTFITTING DOOR HAVING A FIRE-PROTECTION RATING OF NOT LESS THAN 20 MINUTES WHEN TESTED IN ACCORDANCE WITH PART II OF UBC STANDARD T-2.
3. WATER HEATER O/PLATFORM. PROVIDE COMBUSTION AIR & VENT TO OUTSIDE. PROVIDE SEISMIC ANCHORING, S.S.D. PROVIDE DRAIN PAN W/ DRAIN TO OUTSIDE.
4. EXTENT OF GARAGE DOOR IN THE OPEN POSITION.
5. CONCRETE CURB AT GARAGE, S.S.D.
6. DRAIN PAN UNDER WASHER WITH DRAIN PIPE TO OUTSIDE
7. TEMPERED SAFETY GLASS
8. A WINDOW IN BEDROOMS SHALL HAVE A MIN. NET CLEAR OPENING OF 5.7 SO.FT. THE NET CLEAR OPENING HEIGHT SHALL BE 24" & WIDTH SHALL BE 20". SILL HEIGHT SHALL NOT BE MORE THAN 44" A.F.F. (C.B.C. SEC.310.4).

FLOOR PLAN KEYNOTES

- 9. HEATILATOR FIREPLACES PREFABRICATED ZERO CLEARANCE DIRECT VENT GAS FIREPLACE W/GLASS DOOR & OUTSIDE VENTILATION, MODEL NO.4236 WITH ELECTRONIC IGNITION, OR APPROVED EQUAL. PROVIDE NONCOMBUSTIBLE SURROUND, TERMINATION CAP & SHIELD & INSTALL PER MANUF'S SPECS.
10. RAISED HEARTH - SEE INT. ELEV.S
11. FIREPLACE TERMINATION CAP & SHIELD, SEE ELEV.
12. - NOT USED -
13. 30"x30" MIN. ATTIC ACCESS DOOR, & WEATHER STRIPPING. SEE DET.
14. HORIZ. FLOW FALL O/PLATFORM IN ATTIC SPACE. PROVIDE COMBUSTION AIR, VENT & CONDENSATE LINE TO OUTSIDE.
15. MECHANICAL CHASE
16. LINE OF WALL BELOW
17. LINE OF WALL/FLR. ABOVE
18. 8" H. FLAT SOFFIT OPENING
19. LINE INDICATING APPROX. LOC. OF FENCE - SEE LANDSC. DWG
20. CONCRETE SLAB PORCH DECK. SLOPE AWAY FROM BLDG.
21. LANDING AT EXTERIOR DOOR SHALL HAVE A DEPTH OF 36" IN DIRECTION OF WIDTH SHALL BE 12" WIDER THAN OPENING OF DOOR. CONCRETE SHALL HAVE BROOM FINISH AND SLOPE AWAY FROM THE DOOR.
22. UTILITY METER LOCATION.
23. ARCHITECTURAL EXT. RAILING - SEE ELEV.S
24. STONE VENEER. SEE EXTERIOR ELEV.
25. STAIRWAY W/ IT RISERS @ 7-1/4"± AND TREADS @ 10-1/4" SEE DET.
26. +36" H. GUARD RAIL OPEN RAILING W/BALLUSTERS & NEWELL POST. SEE DET.
27. +34" H. WOOD HAND RAIL WITH METAL BRACKETS, SEE DET.
28. +34" H. HANDRAIL/GUARDRAIL W/BALLUSTERS & NEWELL POST SEE DET.
29. WOOD SHELF & POLE
30. UPPER CABINET ABOVE WASHER/ DRYER SPACE
31. UPPER & BASE WOOD CABINET W/ TILE COUNTERTOP & SPLASH
32. KITCHEN ISLAND - COUNTER & CABINET- SEE INT. ELEV.S
33. PANTRY CABINET WITH 5 SHELVES
34. LINEN UPPER & BASE CABINET WITH WOOD TOP
35. LINEN CABINET W/ FACE FRAME DOOR & ADJUSTABLE SHELVES
36. VANITY BATHROOM CABINET W CER.TILE COUNTERTOP & SPLASH
37. MIRROR - SEE INT. ELEV.
38. RECESSED MEDICINE CABINET
39. PORCH POST - SEE ELEV.S
40. BUILT IN SHOWER SEAT- SEE DET.
41. +42"H. LOW BOX WALL-GYP.BD TOP
42. SEE LANDSCAPE PLANS FOR FLATWORK DIMENSIONS

FLOOR AREA:

Table with 2 columns: LOT 1, FLOOR AREA. Rows: 1st FLR: 824 SF, 2nd FLR: 1234 SF, GARAGE: 426 SF, PORCH: 55 SF.